



Disinfection fluid Monitor Series

Online Chlorine Dioxide Meter T6053

Function

Online chlorine dioxide meter is a microprocessor-based water quality online monitoring control instrument.

Typical Use

This instrument is widely used in online monitoring of water supply, tap water, rural drinking water, circulating water, washing film water, disinfectant water, pool water. and other industrial processes. It continuous monitoring and control chlorine dioxide and temperature value in aqueous solution.

Mains Supply

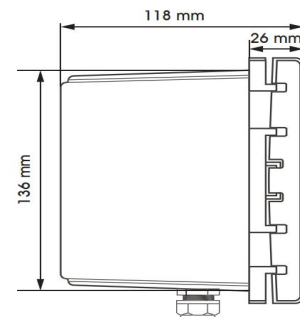
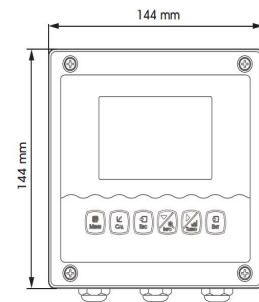
85~265VAC±10%,50±1Hz, power ≤3W;

9~36VDC, power consumption≤3W;

Measuring Range

Chlorine dioxide: 0~20ppm; 0~20mg/L;

Temperature: 0~150℃.



Online Chlorine Dioxide Meter T6053

Features

1. Large display, standard 485 communication, with online and offline alarm, 144*144*118mm meter size, 138*138mm hole size, 4.3 inch large screen display.

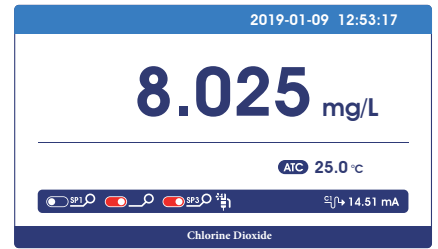
2. The data curve recording function is installed, the machine replaces the manual meter reading, and the query range is arbitrarily specified, so that the data is no longer lost.

3. Historical curve: The chlorine dioxide measurement data can be stored automatically every 5 minutes, and the residual chlorine value can be stored continuously for a month. Provide "history curve" display and "fixed point" query function on the same screen.

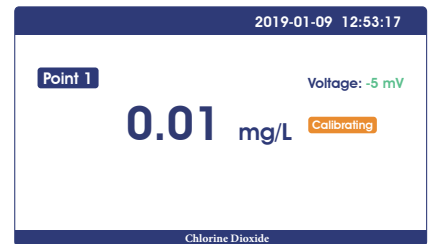
4. Built-in various measurement functions, one machine with multiple functions, meeting the requirements of various measurement standards.

5. The design of the whole machine is waterproof and dustproof, and the back cover of the connection terminal is added to extend the service life in harsh environments.

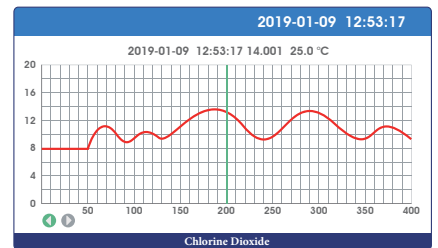
6. Panel/wall/pipe installation, three options are available to meet various industrial site installation requirements.



Measurement Mode



Calibration Mode



Trend Chart Display

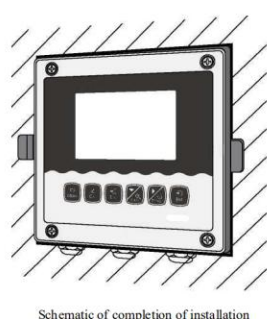


Setting mode

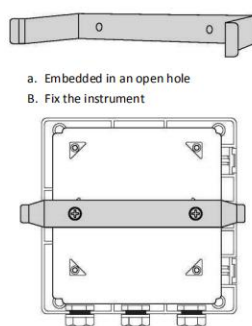
Electrical connections

Electrical connection The connection between the instrument and the sensor: the power supply, output signal, relay alarm contact and the connection between the sensor and the instrument are all inside the instrument. The length of the lead wire for the fixed electrode is usually 5-10 meters, and the corresponding label or color on the sensor Insert the wire into the corresponding terminal inside the instrument and tighten it.

Instrument installation method



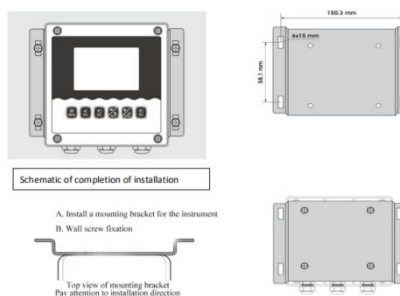
Schematic of completion of installation



- a. Embedded in an open hole
b. Fix the instrument

Embedded installation

Instrument installation: Wall mounted installation



Schematic of completion of installation

- A. Install a mounting bracket for the instrument
B. Wall screw fixation

Top view of mounting bracket
Pay attention to installation direction

Wall mount

Technical specifications

Measurement range	0.005~20.00mg/L ; 0.005~20.00ppm
Measurement unit	Potentiometric method
Resolution	0.001mg/L ; 0.001ppm
Basic error	±1%F.S
Temperature	-10~150.0°C(Based on sensor)
Temperature Resolution	0.1°C
Temperature Basic error	±0.3°C
Current output	2 groups: 4~20mA
Signal output	RS485 Modbus RTU
Other functions	Data record &Curve display
Three relay control contacts	3 groups:5A 250VAC,5A 30VDC
Optional power supply	85~265VAC,9~36VDC,power consumption≤3W
Working conditions	No strong magnetic field interference around except the geomagnetic field.
Working temperature	-10~60°C
Relative humidity	≤90%
Waterproof rating	IP65
Weight	0.8kg
Dimensions	144×144×118mm
Installation opening size	138×138mm
Installation methods	Panel & wall mounted or pipeline

CS5560 Chlorine Dioxide Sensor



Model No.	CS5560
Measurement method	Tri-electrode method
Measure material	Double liquid junction,annular liquid junction
Housing material/Dimensions	PP, Glass, 120mm* Φ 12.7mm
Waterproof grade	IP68
Measurement range	0 - 5.000 mg/L, 0 - 20.00 mg/L
Accuracy	±0.05mg/L;
Pressure resistance	≤0.3Mpa
Temperature compensation	None or Customize NTC10K
Temperature range	0-50℃
Calibration	Sample calibration
Connection methods	4 core cable
Cable length	Standard 5m cable, can be extended to 100m
Installation thread	PG13.5
Application	Tap water, disinfectant fluid, etc.